

Dublin Environmental Gathering

WOOD QUAY
7TH APRIL
2018



DLR PPN
Dún Laoghaire-Rathdown
Public Participation Network



**Fingal
Public
Participation
Network**



South Dublin County
**Public
Participation
Network**

Líonra
Rannpháirtíochta
Pobail
Chathair Bhaile Átha Cliath



Dublin City
**Public
Participation
Network**

IEN 
Irish Environmental Network

Laura Howe

Dún Laoghaire-Rathdown Public Participation Network



DLR PPN
Dún Laoghaire-Rathdown
Public Participation Network



Fingal
Public
Participation
Network



South Dublin County
Public
Participation
Network

Líonra
Rannpháirtíochta
Pobail
Chathair Bhaile Átha Cliath

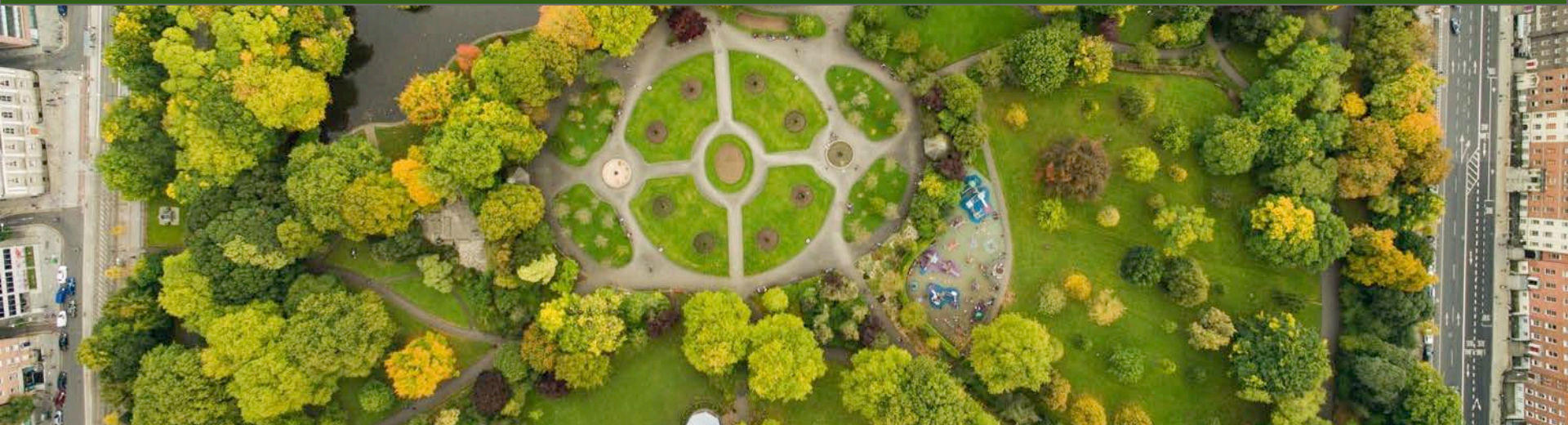


Dublin City
Public
Participation
Network

IEN
Irish Environmental Network

Information

Wifi: Wood Quay Venue
dlrppn.ie/deg2018
#deg2018



DLR PPN
Dún Laoghaire-Rathdown
Public Participation Network



Fingal
Public
Participation
Network



South Dublin County
Public
Participation
Network

Líonra
Rannpháirtíochta
Pobail
Chathair Bhaile Átha Cliath



Dublin City
Public
Participation
Network

IEN
Irish Environmental Network



Schedule:

Session 1: 11:00-11:45

Welcome & overview of Public Participation Networks (PPNs)

Keynote Speaker - Duncan Stewart

Dublin Bay Biosphere – Jenni Roche

Session 2: 11:45-12:45

Projects from the Dublin Public Participation Networks followed by Q&A

Lunch and Networking: 13:00-14:00

Session 3: 14:00- 14:30

Local Environmental Networks - Catherine O' Toole

The Sustainable Development Goals - Caitriona Rogerson

Session 4: 14:30-15:00 Q&A and panel discussion

Jamie Moore

Fingal Public Participation Network

Overview of PPNs



DLR PPN
Dún Laoghaire-Rathdown
Public Participation Network



**Fingal
Public
Participation
Network**



South Dublin County
**Public
Participation
Network**

Líonra
Rannpháirtíochta
Pobail
Chathair Bhaile Átha Cliath



Dublin City
**Public
Participation
Network**

IEN 
Irish Environmental Network

What is a PPN?

- **Public Participation Network**
 - A network of community, voluntary, social inclusion and environmental organisations.
 - 1 in each local authority area
- Over **12,000 registered members groups** across Ireland
- **Started setup in 2014**
 - Part of Local Government Reform / Working Group on Citizen engagement
 - Only now finding their feet

What do PPNs do?

- Co-ordinate the **representation of communities** on Council committees.
- Support communities to **build their capacity** through training and support opportunities
- Promote greater **access to and awareness of information**



Consultations



Networking



Funding



Publicity



Information

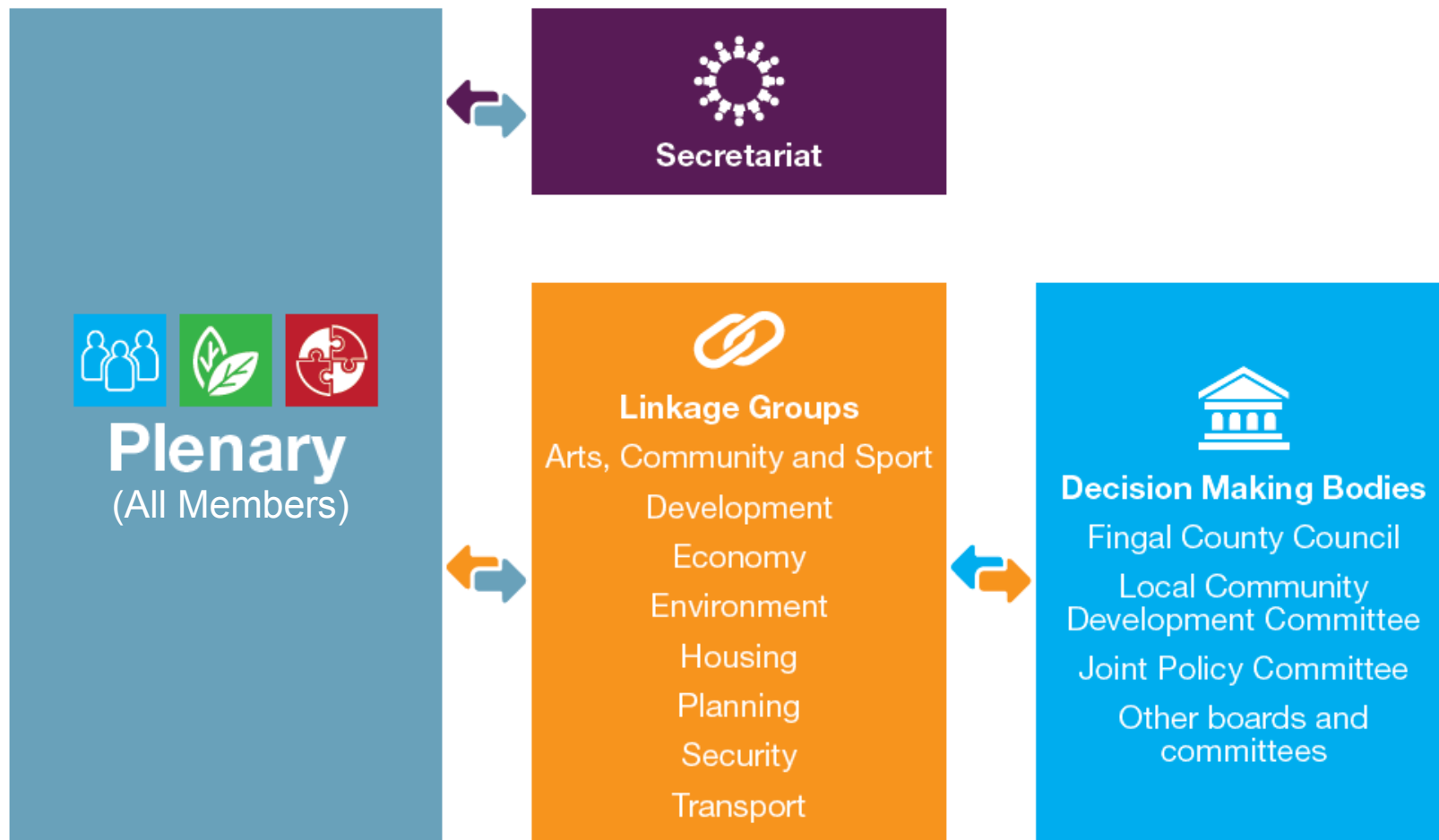


Representation



Training

How do PPNs work?



Example of Linkage Groups

Arts, Community and Sport		Development	
<ul style="list-style-type: none">• Arts• Culture• Gaeilge• Heritage• Libraries• Sport• Youth		<ul style="list-style-type: none">• Education• Health• Local Community Development• Rural Development• Social Inclusion• Wellbeing	
Economy		Environment	Housing
<ul style="list-style-type: none">• Economic Development• Enterprise• Tourism		<ul style="list-style-type: none">• Climate Change• Environment• Water	<ul style="list-style-type: none">• Homelessness• Housing
Planning		Security	Transport
<ul style="list-style-type: none">• Planning• Strategic Infrastructure		<ul style="list-style-type: none">• Community Safety• Crime• Policing	<ul style="list-style-type: none">• Air Transport• Public Transport• Rural Transport

Why is this important?

OECD Better Life Index 2016

- Ireland is 33rd out of 38 countries
 - Civic Engagement
- Ireland is 38th out of 38 countries
 - Stakeholder engagement for developing regulations

The Organisation for Economic Co-operation and Development is an intergovernmental economic organisation with 35 member countries, founded in 1960 to stimulate economic progress and world trade.

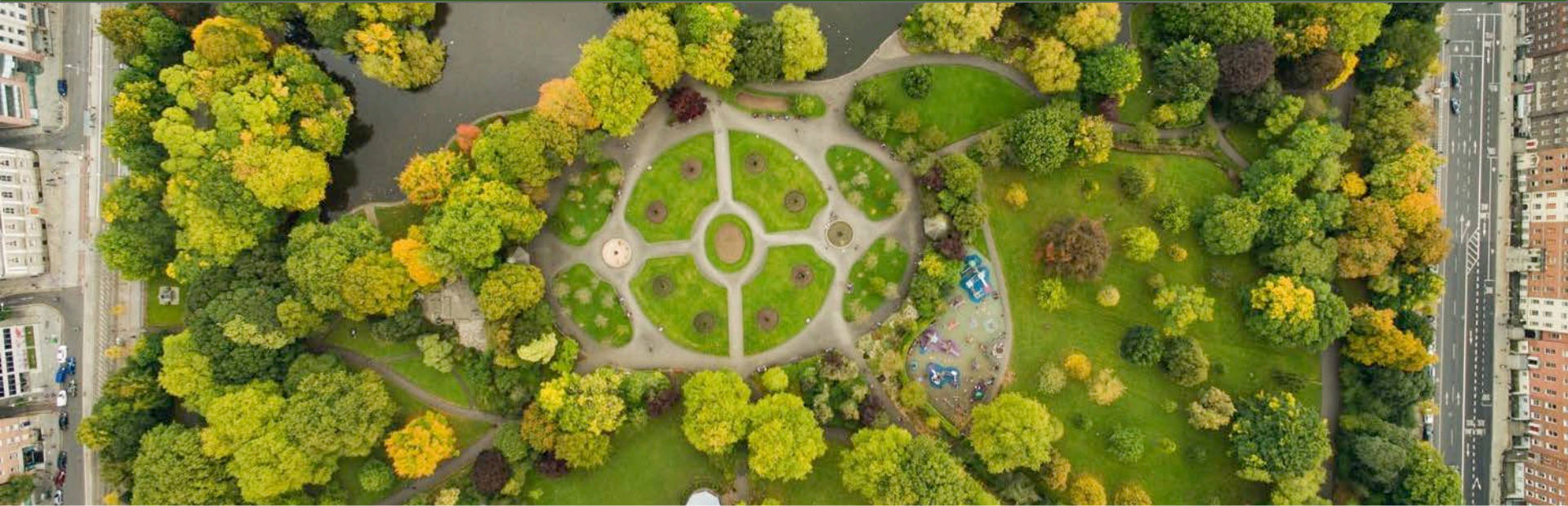
Why is this important?



Duncan Stewart

Environmentalism, Architect and Broadcaster

Keynote Speaker



DLR PPN
Dún Laoghaire-Rathdown
Public Participation Network



Fingal
Public
Participation
Network



South Dublin County
Public
Participation
Network

Líonra
Rannpháirtíochta
Pobail
Chathair Bhaile Átha Cliath



Dublin City
Public
Participation
Network

IEN
Irish Environmental Network

Jenni Roche

Dublin City Council

Dublin Bay Biosphere Partnership



DLR PPN
Dún Laoghaire-Rathdown
Public Participation Network



**Fingal
Public
Participation
Network**



South Dublin County
**Public
Participation
Network**

Líonra
Rannpháirtíochta
Pobail
Chathair Bhaile Átha Cliath



Dublin City
**Public
Participation
Network**

IEN 
Irish Environmental Network

Dublin Bay Biosphere

Jenni Roche, Biosphere Coordinator

Dublin Bay Biosphere Partnership



BITHSFÉIR
Chuan Bhaile Átha Cliath
Dublin Bay
BIOSPHERE

What is a Biosphere?

- Biospheres are internationally recognised for their biodiversity value yet also actively managed to promote a balanced relationship between people and nature.
- Designated by the United Nations Educational, Scientific and Cultural Organisation (UNESCO)
- Global network of 669 Biospheres in 120 countries (2 in Ireland)



BITHSFÉIR
Chuan Bhaile Átha Cliath
Dublin Bay
BIOSPHERE

UNESCO Biosphere Goals

1. Conservation: promoting the protection of landscapes, habitats, wildlife and cultural values
2. Learning: supporting education and research, for a better understanding of nature and global issues
3. Development: fostering a sustainable economy and society for people living and working in the area



BITHSFÉIR
Chuan Bhaile Átha Cliath
Dublin Bay
BIOSPHERE

Biosphere Values

- Our purpose: Inspire a positive future by connecting people and nature today
- Our values:
 1. Celebrate life – positivity
 2. Empower people – participation
 3. Model solutions – innovation
 4. Belong together – collective

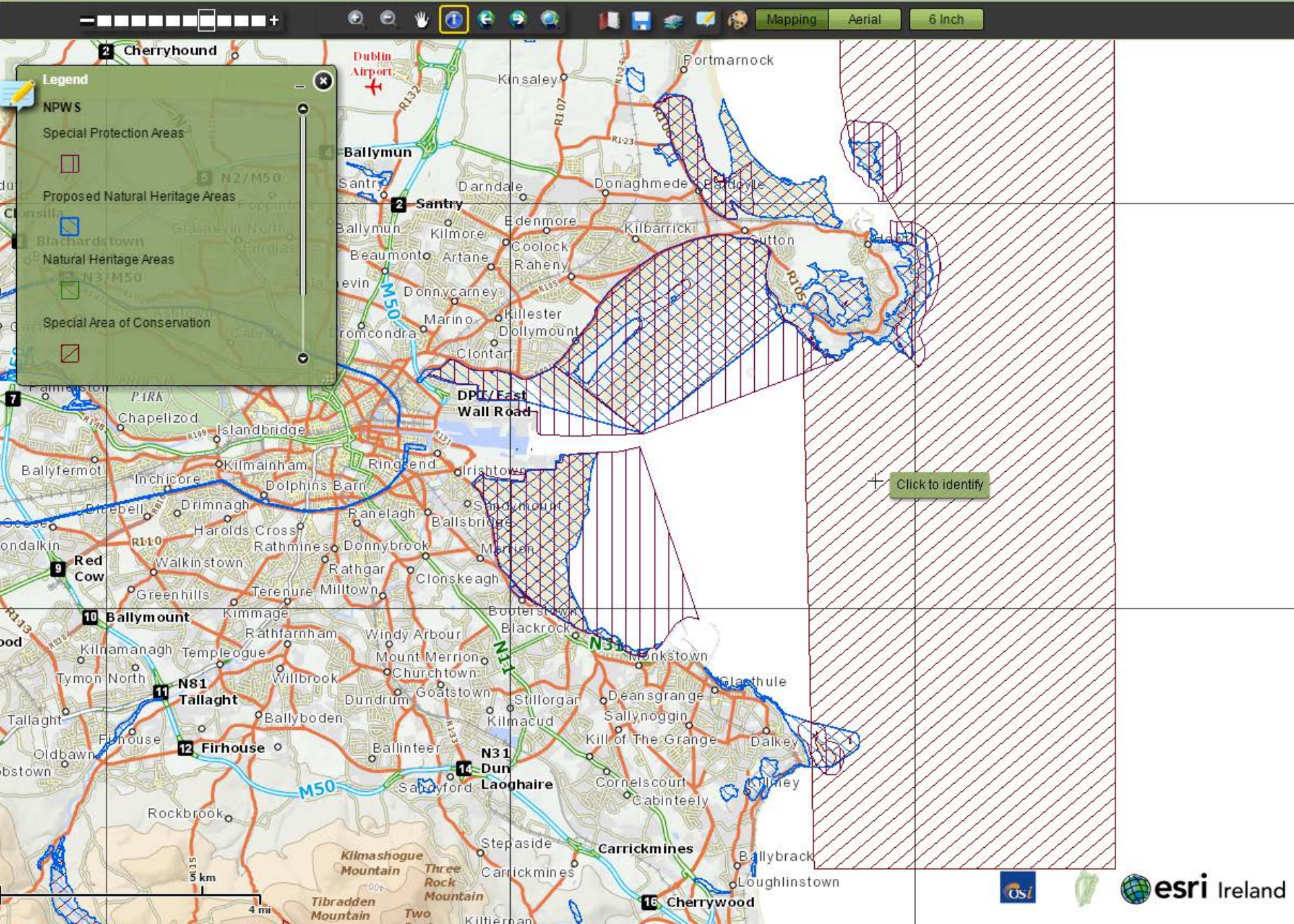


BITHSFÉIR
Chuan Bhaile Átha Cliath
Dublin Bay
BIOSPHERE



- North Bull Island Biosphere (1981)
- Dublin Bay Biosphere (2015)
- 305 km²
- 330,000+ residents

- North Bull Island Biosphere (1981)
- Dublin Bay Biosphere (2015)
- 305 km²
- 330,000+ residents



Biosphere zonation

- Biospheres contain three management zones:
 1. Core zone
 2. Buffer zone
 3. Transition zone
- Core zone: protected habitats (Natura 2000 sites), used for biodiversity conservation, ecological monitoring, non-destructive research, education and other low-impact uses

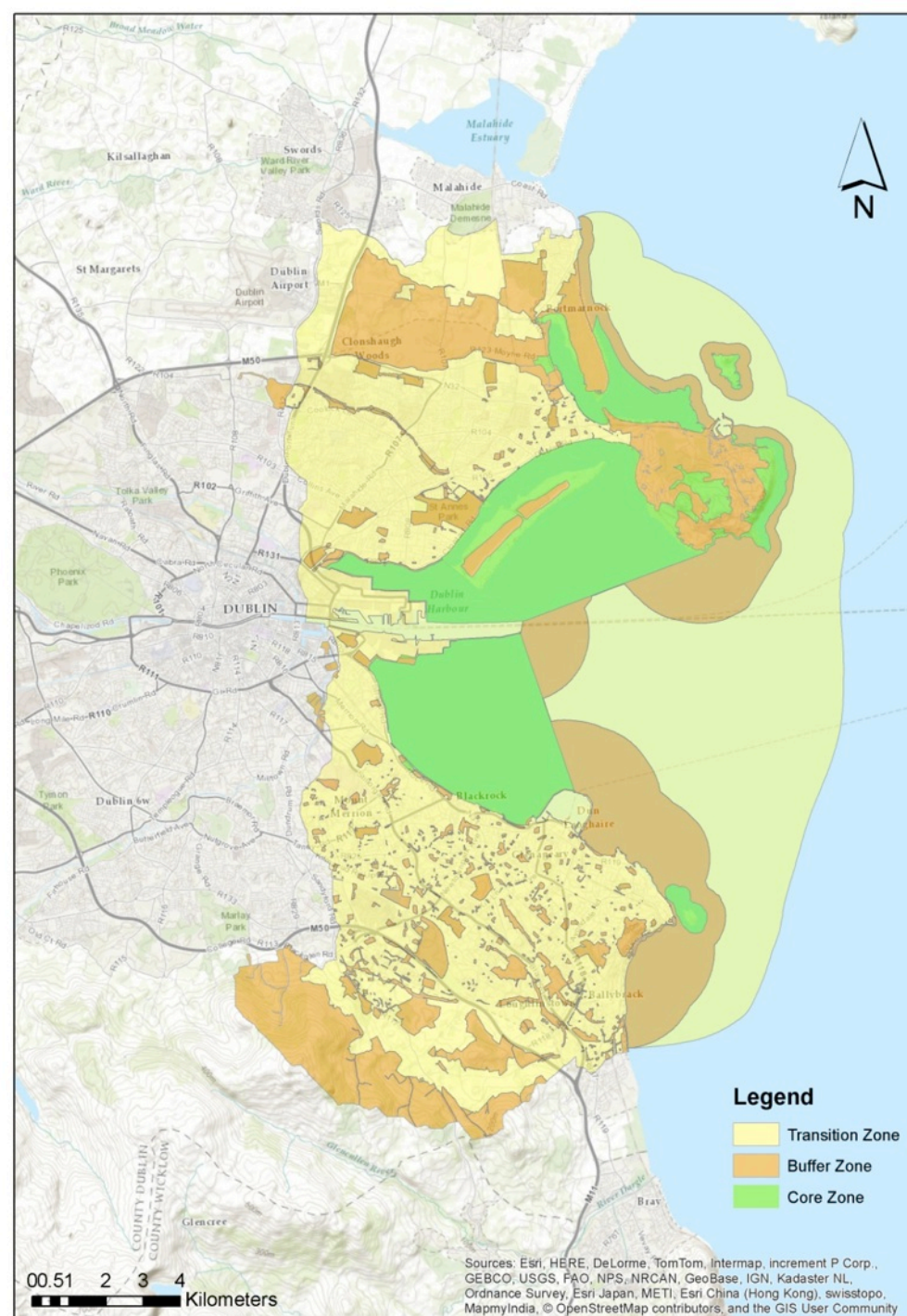


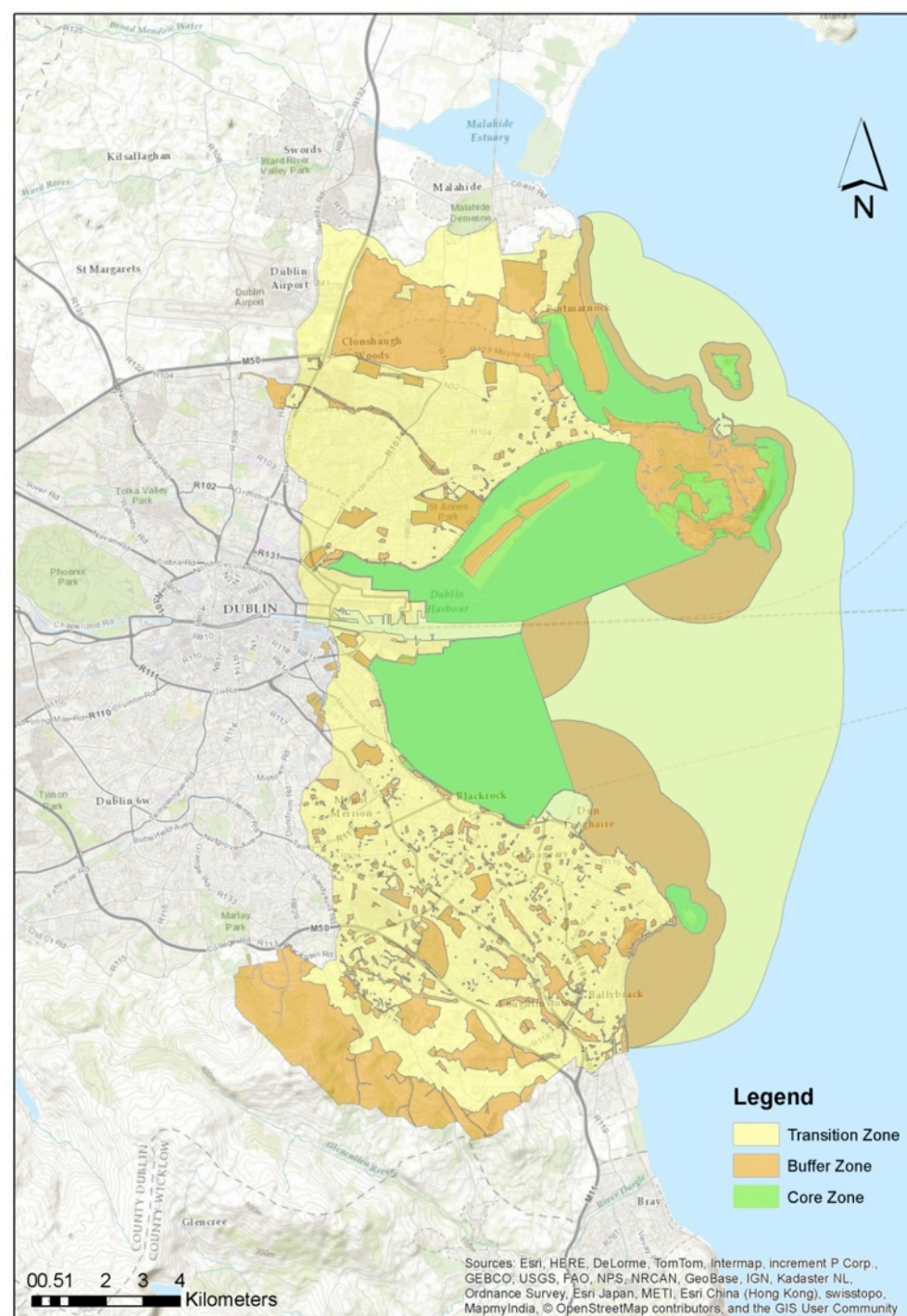
BITHSFÉIR
Chuan Bhaile Átha Cliath
Dublin Bay
BIOSPHERE

Howth Head Coast



North Bull Island - the original Biosphere





Sandymount



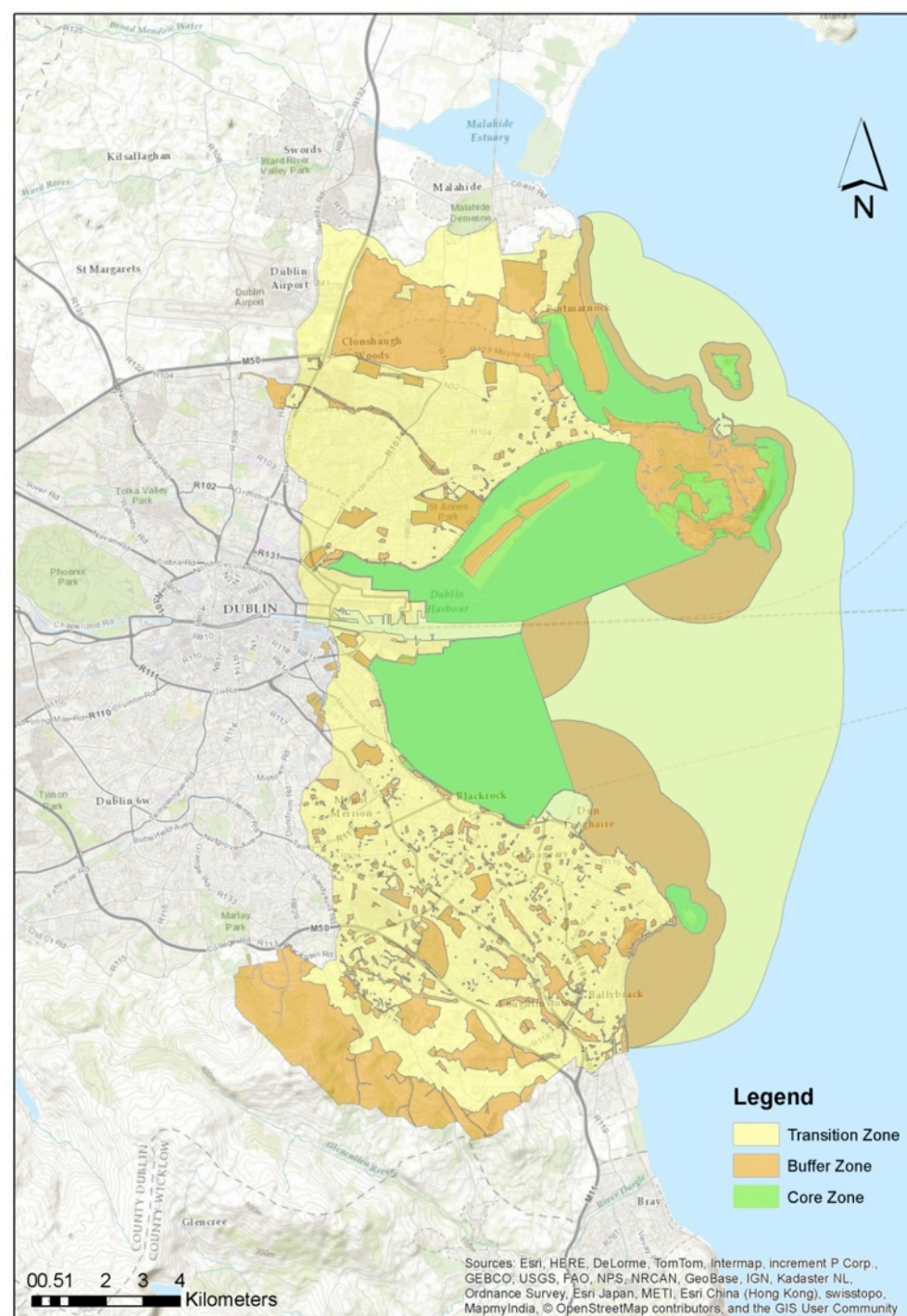
Dalkey Island

Biosphere zonation

- Buffer zone: surrounds or adjoins the core zone and is managed to support the core zone. Used for activities compatible with sound ecological practices e.g. education, recreation, ecotourism and research.



BITHSFÉIR
Chuan Bhaile Átha Cliath
Dublin Bay
BIOSPHERE



St Anne's Park



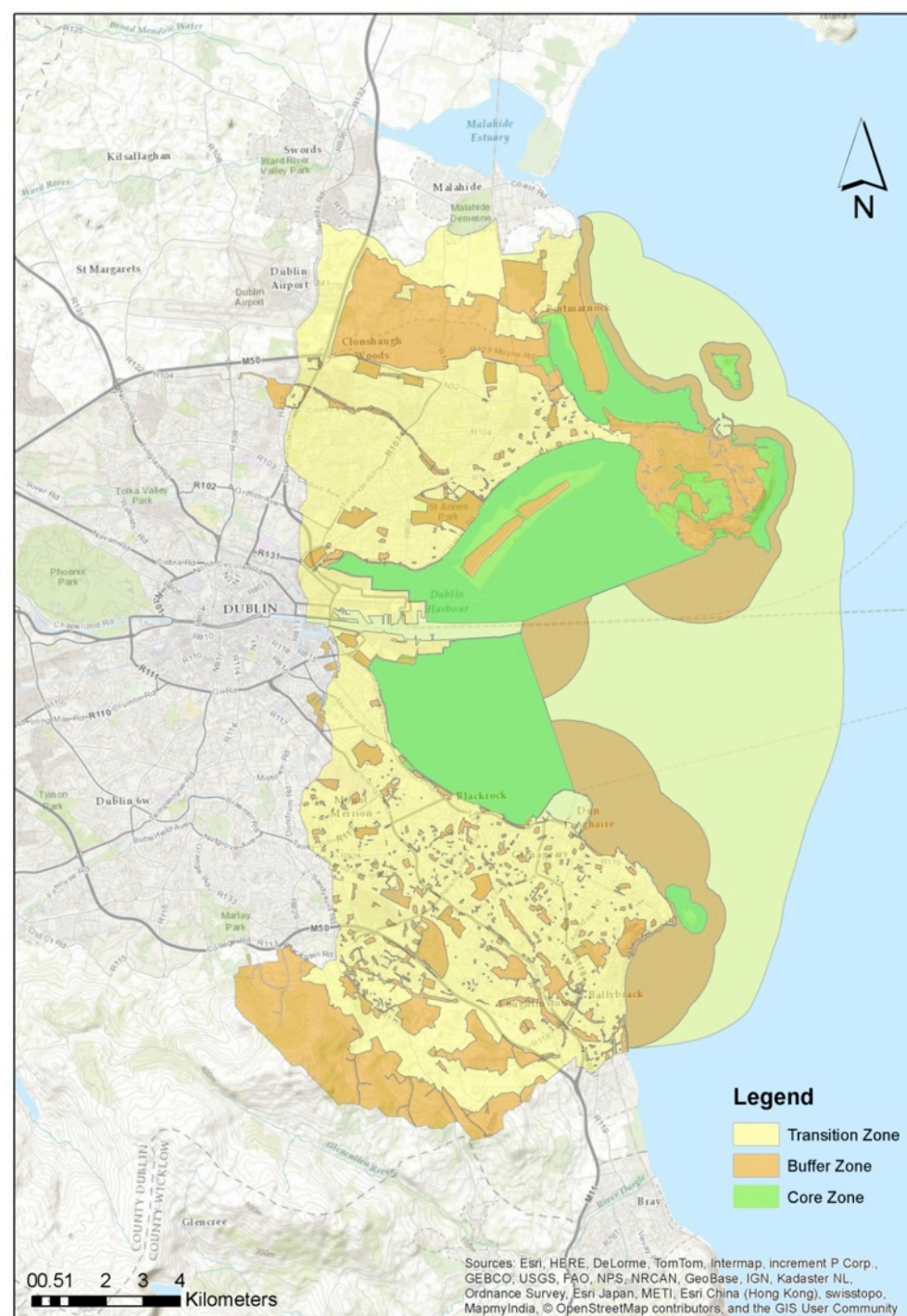
Killiney Hill

Biosphere Zonation

- Transition zone: contains settlements and a variety of activities. Management agencies work together with stakeholders to promote sustainable development.



BITHSFÉIR
Chuan Bhaile Átha Cliath
Dublin Bay
BIOSPHERE



Dublin Docklands



Dun-Laoghaire Harbour

Dublin Bay Biosphere Partnership

- Dublin City Council
- Dun Laoghaire-Rathdown County Council
- Fingal County Council
- Dublin Port Company
- National Parks & Wildlife Service
- Fáilte Ireland
- Works with community groups, NGOs, businesses, universities and schools



BITHSFÉIR
Chuan Bhaile Átha Cliath
Dublin Bay
BIOSPHERE

Projects

- Conservation & Research Strategy
- Education Programme
 - Video by Youth Council
 - Schools Programme
 - Publications
 - Programme of Events
 - Conferences
- Business Development Plan
 - Biosphere Discovery Tours



BITHSFÉIR
Chuan Bhaile Átha Cliath
Dublin Bay
BIOSPHERE

Contact Us

Dublin Bay Biosphere Partnership

Email: biosphere@dublincity.ie

Website: www.dublinbaybiosphere.ie

Facebook: www.facebook.com/dublinbaybiosphere

Twitter: www.twitter.com/dublinbiosphere

Youtube Channel: Search “Dublin Bay Biosphere”

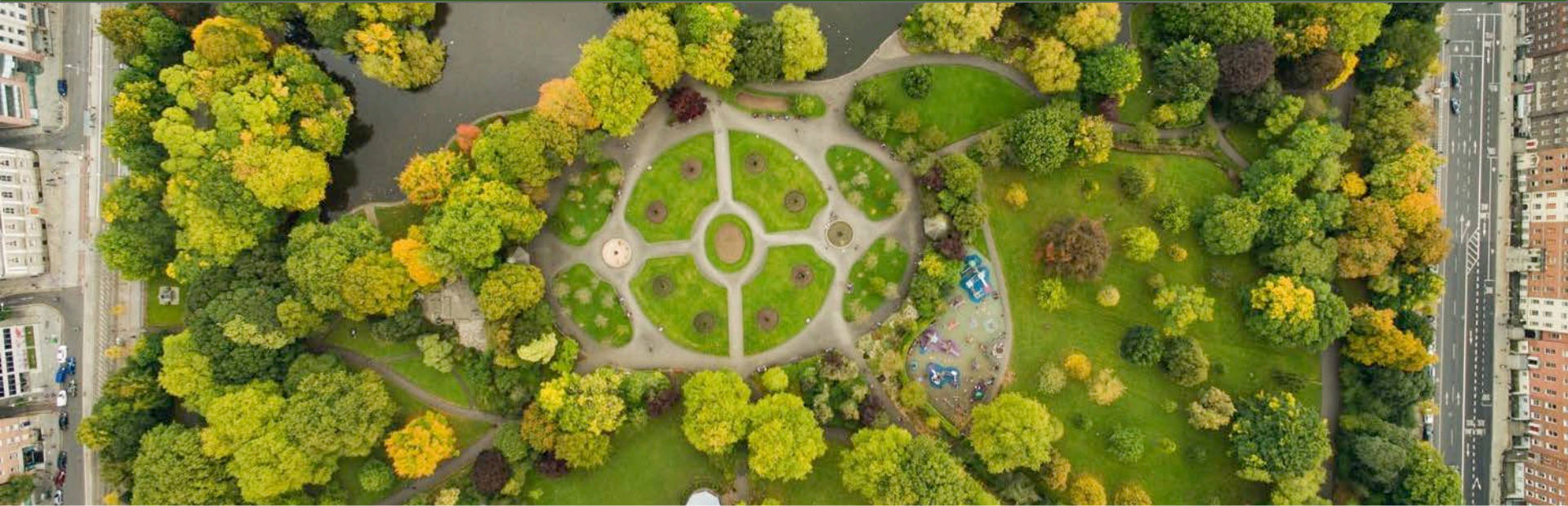


BITHSFÉIR
Chuan Bhaile Átha Cliath
Dublin Bay
BIOSPHERE

Una Ruddock

South Dublin County Public Participation Network

Ogham Tree Trail / Complementary Currency



Ogham Tree Trail

Una Ruddock
7 April 2018



South Dublin County
**Public
Participation
Network**

Fado, Fado

- Ethical Investment
 - Forestry Fund
- Strategic Policy Committee
 - Irish Forestry Policy Review
- Community Radio – Eco Era
 - Sustainable Energy Finance

Yew, Willow, Scots Pine



Value Dictionaries

- Economic
 - Commodity, raw material, market value, price
- Ecology
 - Photosynthesis, sequestration, habitat
- Socio-cultural
 - Awe, sacred, heritage, landscape beauty

Public Participation Network

- Radio guests
- Plenary
- Workplan – identify potential partners
- Parks department

Ogham Alphabet



A
airm



O
onn



U
ur



E
eedha



I
iodhedh



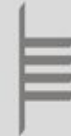
B
beith



L
luis



F
feem



S
seil



N
nion



H
hueth



D
deir



T
tinne



C
coll



Q
quert



M
muin



G
gort



NG
ngeetel



Z
steif



R
ruis

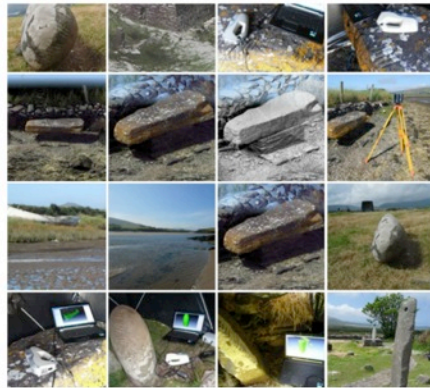
Ogham Stones

The 3D recording of Ancient Irish Ogham Stones

Dr Nora White
School of Celtic Studies
DIAS



An Boice
Ealaíon, Oidhreacht agus Gaeltachta
Department of
Arts, Heritage and the Gaeltacht



Ogham
our earliest writing



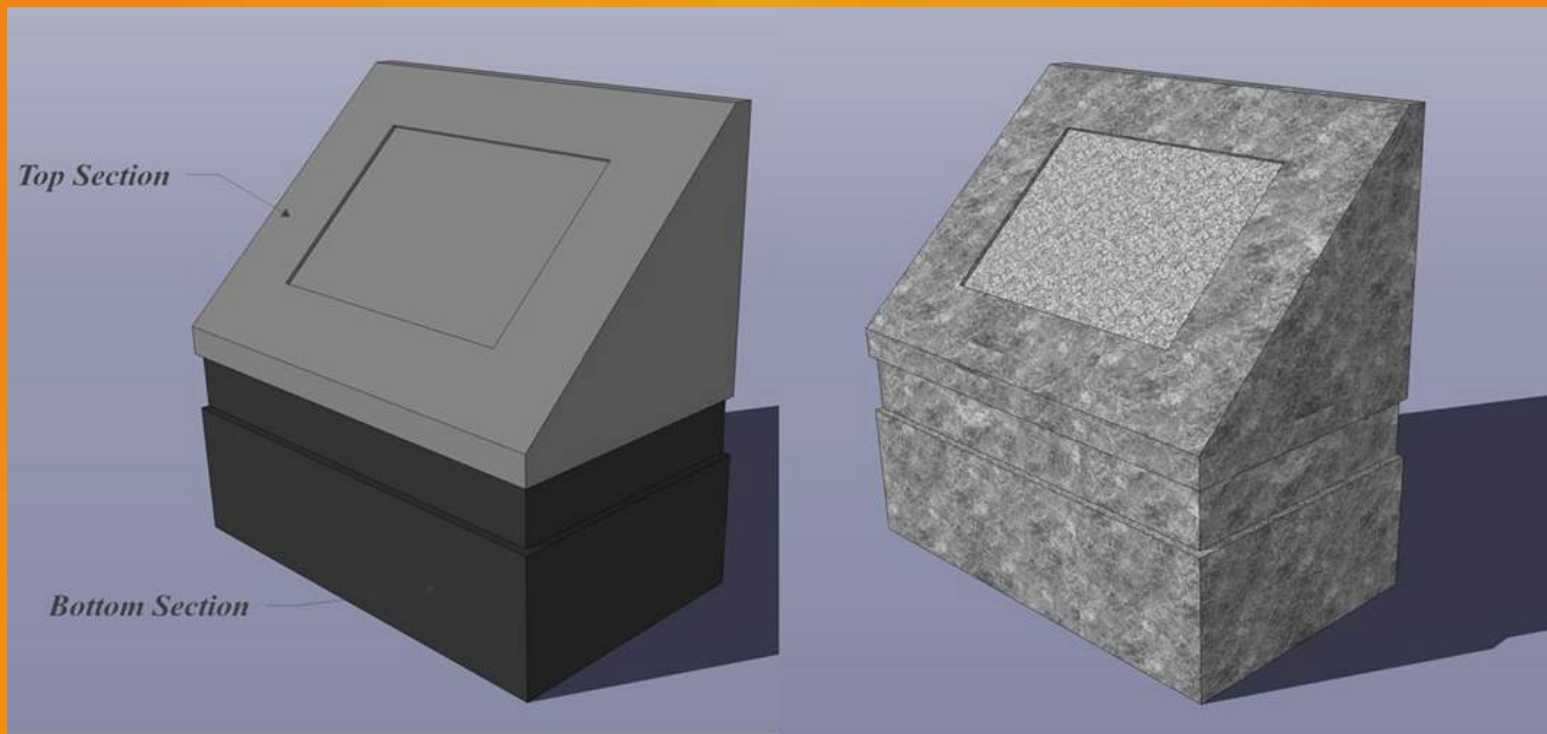
Herbert and Bushy Parks



Sample Stone Marker



Entrance Sign



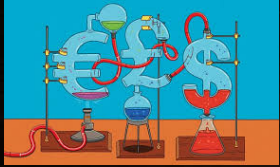
Learning

- We protect what we love
- Networking
- Environment | cultural heritage



Economics of Affluence | Politics of Oppression





Ecocide

$$A = P \left(1 + \frac{r}{n} \right)^{nt}$$

Driven by **GROWTH**

- Debt-based money

The alternative

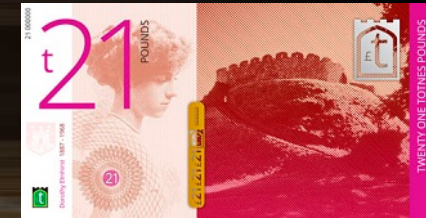
- Complementary currencies

Good money for bad times

- Designed for equitable transfer of goods / services
- Match unused resources with unmet needs



Complementary currencies



Web of knowledge



- Operationalise county well-being
- Quality of life v GNP
- Low price does not mean low cost
- Hope is subversive...the future can be different

Diarmuid McAree

Dún Laoghaire-Rathdown Public Participation Network

Shankill Trees for All



DLR PPN
Dún Laoghaire-Rathdown
Public Participation Network



Fingal
Public
Participation
Network



South Dublin County
Public
Participation
Network

Líonra
Rannpháirtíochta
Pobail
Chathair Bhaile Átha Cliath



Dublin City
Public
Participation
Network

IEN
Irish Environmental Network



“TREES FOR ALL” PROJECT

PPN Environmental Gathering

7TH APRIL 2018

Diarmuid McAree – Director Crann – Trees for Ireland



**Target was to plant 13,242 (Census 2006) trees in Shankill
To date more than 15,500 planted! 'The Right Tree in the Right Place'**



'TREES FOR ALL' CONTRIBUTES TO THE CONSERVATION AND ENHANCEMENT OF BIODIVERSITY IN SHANKILL



DOING OUR BIT FOR THE NATIONAL POLLINATOR PLAN!



‘TREES FOR ALL’ – PLANNING & ONGOING COMMUNITY FEEDBACK



TREE PLANTING IN ACTION!

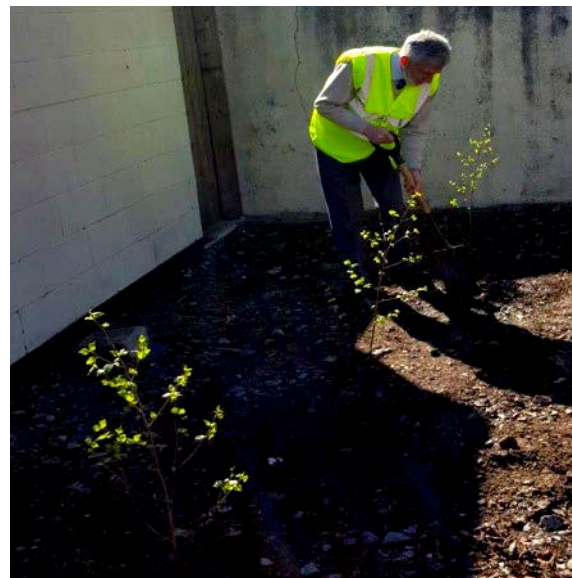


NATIONAL TREE WEEK – TREES SUPPLIED COURTESY OF COILLTE – THANK YOU!

COMMUNITY BENEFITS OF OUR 'TREES FOR ALL' PROJECT



Hedgerow and Tree Planting by Shankill Tidy Towns Community and Dunlaoghaire Rathdown County Council



Community Participation.....





**Grow your share of fresh air – plant a tree!
Involving the Community!**

**In partnership with Crann – Trees for Ireland:
Tidy Towns Assist Programme and Crann Schools Education Programme**



‘TREES FOR ALL’ - Educating our future tree planters!

A template for other Tidy Towns to consider!





MAY THE
FOREST
BE WITH YOU



“TREES FOR ALL” – THE RIGHT TREE IN THE RIGHT PLACE



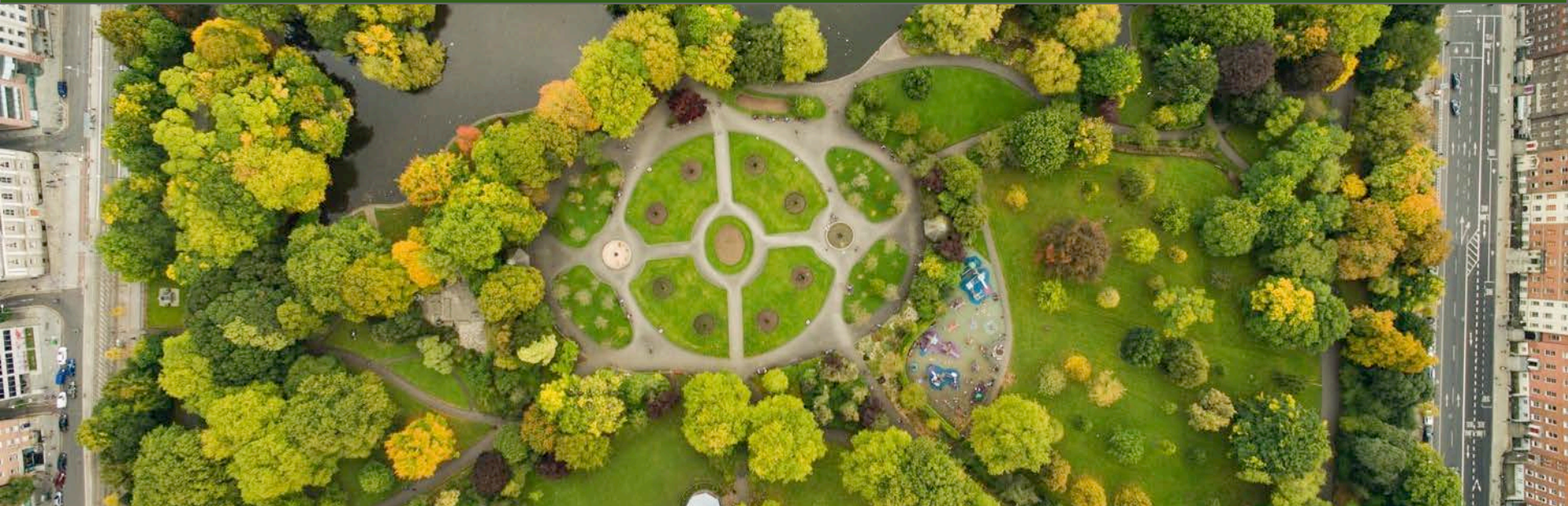
**SUPPORTED BY: Crann – ‘Trees for Ireland’
Shankill Tidy Towns
DLR Parks**

GO RAIBH MAITH AGAIBH

Richard Taplin

Dublin City Public Participation Network

Bridgefoot Street Community Garden Project



BRIDGE FOOT COMMUNITY
GARDEN OPEN EVERY Sat 2pm
Build Our Park
Grow Your Own Food FLOWERS.FRIENDS
DUBLIN info dublinmensshed@gmail.com

Bridgefoot street community

Allotments @ B.S.C.G Spring 2017



OUR POLYTUNNEL WAS SAVED FROM SQUAT CITY, SMITHFIELD

VOLUNTEERS NOW NEEDED

We are now looking for volunteers to join and assist us in our yearly CALENDAR OF EVENTS.

STREET FEAST -

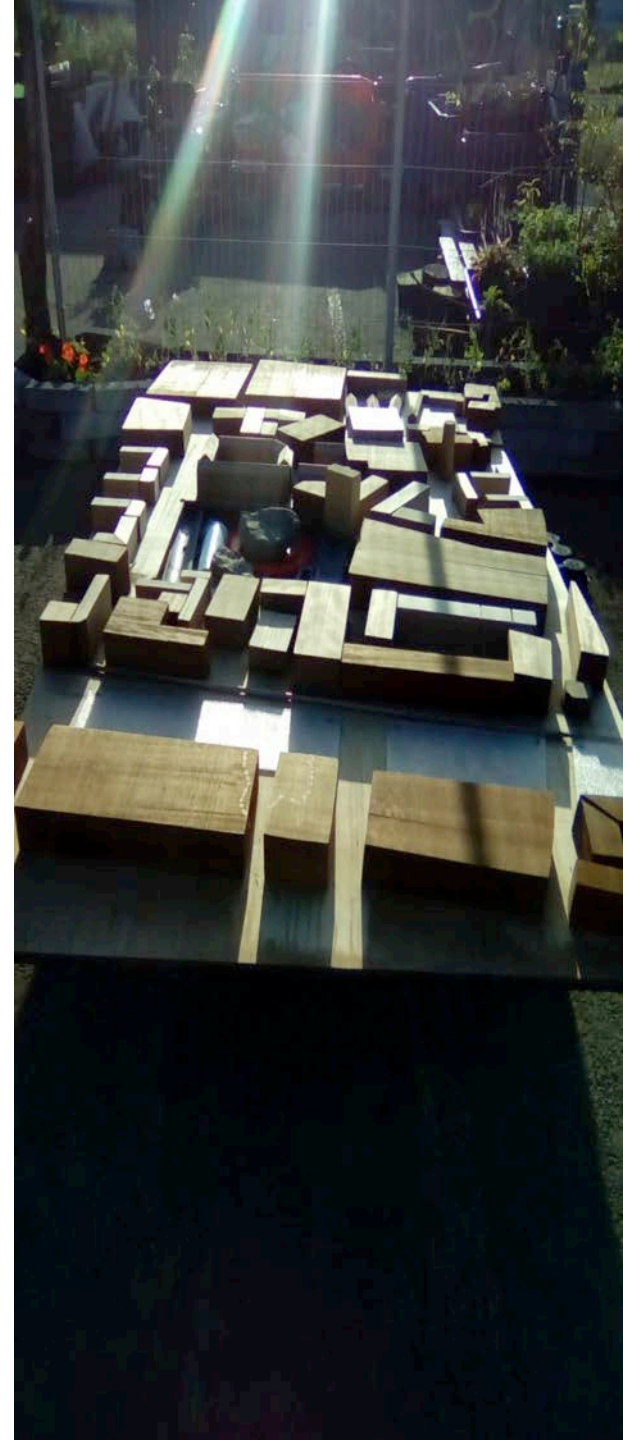
G.I.Y (grow it your self) Spring planting

N.C.A.D Model Building

Bike safety-rowing-Skipping-Fitness programme-

Co/operative Community Management .

Weekly singing group Weds 1-2pm N.C.A.D .



Networking groups, PPN Link in Mtgs, PARK TALK

Various groups exist in the area.

S.I.C.C.D.A South Inner City Community Development Association.

Robert Emmet CDP.

S.W.I.C.N South West Inner City Community Network.

CORN Community Organisations & Residents Network

L.C.D.C Local Community Development Committee.

Mendicity Ins. Simon Community, M.Q.I Merchants Quay Ireland



STREET FEAST 2017

OUR STREET FEAST IS 10 TH JUNE 2018

CALL FOR VOLUNTEERS.

FORTNIGHTLY PLANNING MEETUPS. RSVP 014547018

G.I.Y

G.I.Y @ BRIDGEFOOT
STREET COMMUNITY
GARDEN

Every

Tuesday 11-1400

Second Sat 10 - 1400

LOVELY
SPUDS



GROW IT YOURSELF

G.I.Y @ PIMLICO

MEET UP

EVERY WEDS 1630-2000

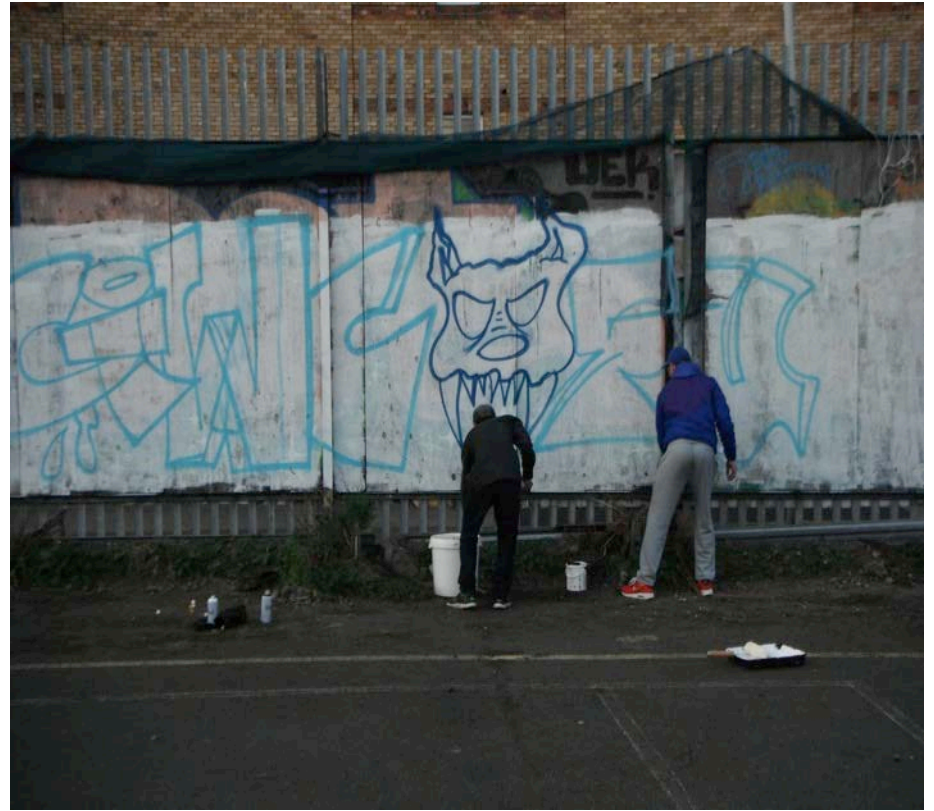
@SCHOOL STREET

FAMILY RESOURCE

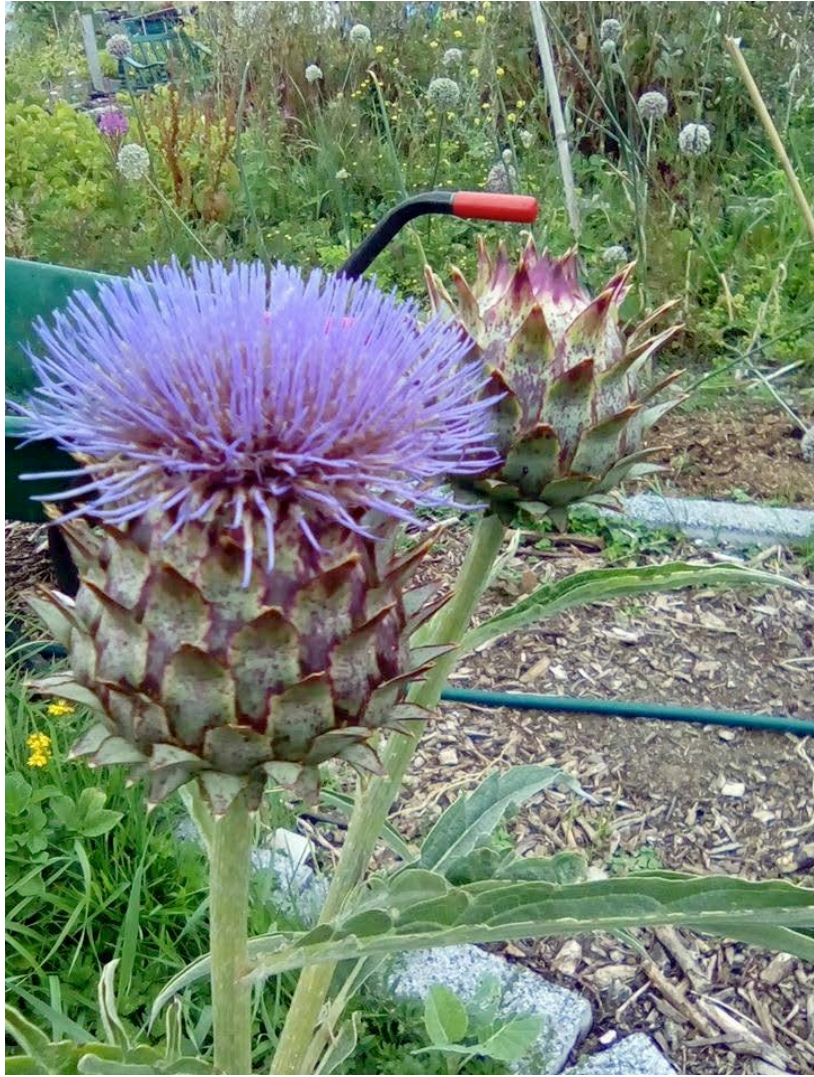
CENTER.

Our graffiti boards are hit regularly by local and international artists.











Groups involved @ B.S.C.G

yF.O.E-Irish Men's Shed- An Taisce-Trinity Students-N.C.A.D-Local Residents-
Simon Community

-Mendicity Institute-Homeless Helping Homeless-

Romanian Community-Schools Street Family Resource Center-.

Weekly meetings are in the garden every Sat 1400-1800

Last Sat of each month ."PARK TALK" 10 - 12 @ School Street FRC

B.S.C.G Dublin's hardest working Choir meet weekly. Rsvp @ 01 4547018

2018 and we're off to a flying start.

We have just participated in a collaboration with NCAD and local art groups, School Street Family resource center, C.M.S early school leavers, community gardeners, and our very own lads from the men's shed.

It was a huge success and we initiated our HOKE POKE campaign where we will try to break a Guinness World Record for the most people doing the

HOKE POKE. It will be a National campaign.

BRIDGEFOOT STREET COMMUNITY GARDEN REACHED THE TOP 3 G.I.Y (GROW IT YOURSELF) Gardens in IRELAND



We Are now National Champions AND PROUD.
Weekly G.I.Y meet ups. rsvp @
dublinmensshed@gmail.com



March and April REGULAR meet ups .

Monday WEEKLY AND MONTHLY PLANNING.rsvp

Tuesday G.I.Y GROW IT YOUR SELF, planting & weeding. 11-1400

Wednesday Occupational therapy workshops and student morning 11-1400.

Thursday Key holders. Men's shed work day, garden maintenance.

Friday garden prepping for community gardeners,

Rowing From 1330-1600 all welcome,

New groups Cycling SAFETY/Road confidence, Maintenance rsvp.

Tin Whistle classes, yoga.meditation,irish language and nutrition. rsvp

Bridgefoot street community garden is an all inclusive space.

Everybody must sign in and understand the health and safety for themselves and other garden users.

Our community garden is MY garden YOUR garden OUR Garden.

We are here to GROW TOGETHER.....Learn, Teach, Share and inform.

Cooperative Community Management

Our cooperative community management is to work along side and in cooperation D.C.C parks department.

HOW WE IMAGINE IT

4 Corners of the Park will provide the core of the management and Development Committee .

This will be made up of Local residents, businesses, D.C.C and other service providers such as M.Q.I , Mendicity and Simon Community all who have already engaged with the community garden.

There will be 8 sub groups.

Sub groups such as

Men's Shed,

Robert Emmet Committee

G.I.Y (Grow it your self)

School Street FRC,

We Share,

yF.O.E young friends of the Earth,

Oliver Bond Community Art/Garden group,

THESE GROUPS WILL GIVE ACCESS TO HORTICULTURAL,CULTURAL AND ENVIRONMENTAL
TRAINING AND SOCIAL EVENTS.

UPCOMING EVENTS

FRIDAY THE 13TH WORK DAY . A GROUP TEAM BUILDING EXERCISE THAT HELD ONCE A YEAR WITH WORK DAY FROM SMITHFIELD.

SAT 28 TH WORLD SOUP DISCO .

PROMOTING STOPPING FOOD WASTAGE BY MAKING SOUP, AND LISTENING TO DISCO MUSIC.

WE WILL ALSO HAVE A HOW TO RECYCLE WORK SHOP. RSVP

Maria Tormey

Fingal Public Participation Network

Blakestown Drive Community Group



DLR PPN
Dún Laoghaire-Rathdown
Public Participation Network



Fingal
Public
Participation
Network



South Dublin County
Public
Participation
Network

Líonra
Rannpháirtíochta
Pobail
Chathair Bhaile Átha Cliath



Dublin City
Public
Participation
Network

IEN
Irish Environmental Network

BD
CG

BLAKESTOWN DRIVE COMMUNITY GROUP



Fingal
Public
Participation
Network

“Hello”

Maria Tormey

Dublin Environmental Gathering

07 April 2018

- Independent good willed
- Together in a common bond
- Stewardship of Environment
- Work, deeds & education
- Ethos -strategically promote
- Environment awareness
- Local practical involvement
- Wider implications
- Strategy -step change approach
- Environment awareness
- Appreciation and protection.



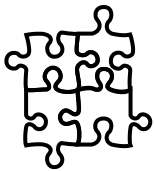
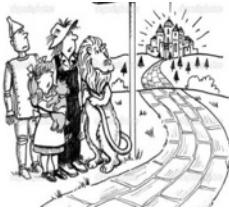
BD
CG

BLAKESTOWN DRIVE COMMUNITY GROUP

TO IMPROVE THE WELLBEING OF ALL OUR COMMUNITY PARTNERS



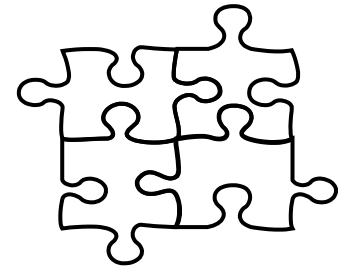
Project Driven - Step Change



BD
CG

PROJECT CONNECT

EVENTS CONNECTIONS PARTNERSHIPS = INTEROPERABILITY



Daughters of Charity
Disability Support Services



Comhairle Contae Fhine Gall
Fingal County Council

BD
CG

HOW IT BEGAN... PROJECT PEGASUS



“not flogging a dead horse but giving it wings and letting it fly”

- BDCG transformed neglected ground,
- Dumping & graffiti black spot
- Award winning showpiece nature strip,
- Connect Partners
- Blanchardstown Institute of Technology (ITB)
- Horticultural Department
- Back entrance to the Scoil Mhuire National School
- Nature trail for the local children

BD
CG

PROJECT PEGASUS

FROM THIS...



BD
CG

PROJECT VIVALDI YELLOW BRICK ROAD



Project MAPLE



Managing – Intervention, Positive Action,
Stewardship

Appreciating – Investing, Rewarding, Growing
Understanding, Valuing

Protecting – Defending, Shielding, Championing.

Loving – Tender, Devoted, Caring

Environment – all our surroundings, locale,
ecosystem & nature

BD
CG

PROJECT HILTON

BUG HOTEL



BD
CG

PROJECT NOAH POLLINATORS



- Bee / Butterfly
- Friendly
- 2x2
- Reclaim / Wasted
- Involvement
- Getting On-Board





Blooming Bees: The All-Ireland Pollinator Plan

<https://www.youtube.com/watch?v=uBIKqFywxTY>

BD
CG

PROJECT MAPLE BUTTERFLIES & BEES



BD
CG

PROJECT TORII

“PASS THROUGH & ENTER”



Outdoor Class Room – Nature Trail – Japanese Garden
Living Environment – Enhances Curriculum



- Difficulties
- Earned not Given
- Investment vs Spending
- Strategic Approach
- 2+2=5
- Connecting Projects
- Why & What...
- Intrinsic Rewards
- Recognition



BD
CG

BLAKESTOWN DRIVE COMMUNITY GROUP

AN ENVIRONMENTAL INVESTMENT IN SOCIETY



“Thank You”

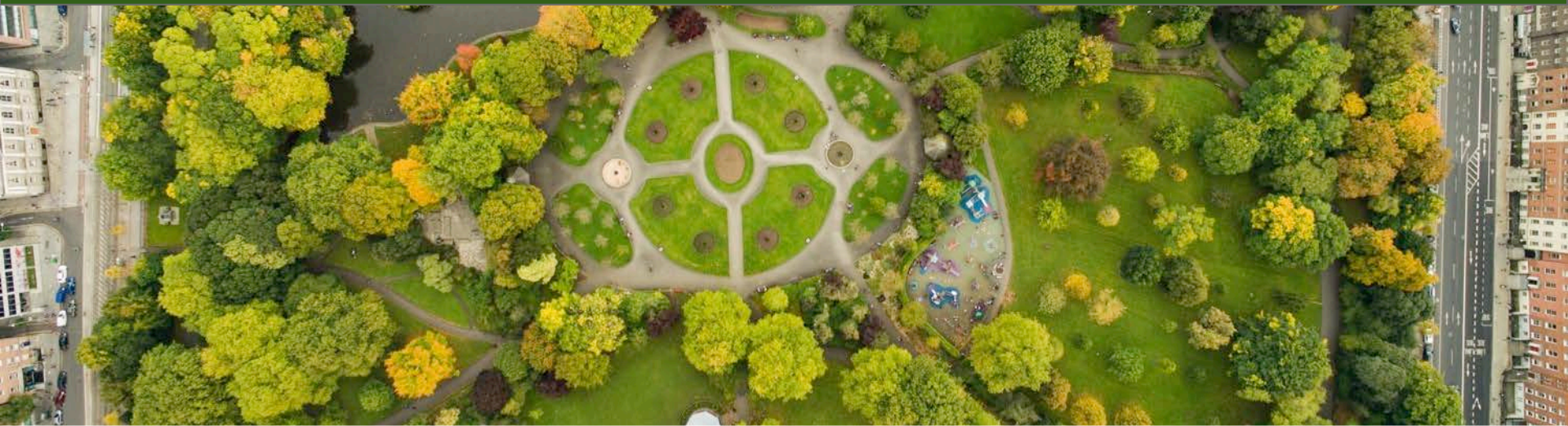
Q & A Panel

Diarmuid McAree, Shankill Tidy Towns/Crann/DLR PPN

Una Ruddock, Eco Ear/South Dublin County PPN

Richard Taplin, Dublin Men's Sheds/Dublin City PPN

Maria Tormey, Blakestown Drive C. G./Fingal PPN



DLR PPN
Dún Laoghaire-Rathdown
Public Participation Network



**Fingal
Public
Participation
Network**



South Dublin County
**Public
Participation
Network**

Líonra
Rannpháirtíochta
Pobail
Chathair Bhaile Átha Cliath



Dublin City
**Public
Participation
Network**

IEN
Irish Environmental Network

Dublin Environmental Gathering

WOOD QUAY
7TH APRIL
2018



DLR PPN
Dún Laoghaire-Rathdown
Public Participation Network



**Fingal
Public
Participation
Network**



South Dublin County
**Public
Participation
Network**

Líonra
Rannpháirtíochta
Pobail
Chathair Bhaile Átha Cliath



Dublin City
**Public
Participation
Network**

IEN 
Irish Environmental Network

GET INVOLVED

24TH APRIL: FINGAL PPN PLENARY

- www.fingalppn.ie/plenary

25TH APRIL: DLR PPN PLENARY

- www.dlrppn.ie/plenary-meetings



DLR PPN
Dún Laoghaire-Rathdown
Public Participation Network



**Fingal
Public
Participation
Network**



South Dublin County
**Public
Participation
Network**

Líonra
Rannpháirtíochta
Pobail
Chathair Bhaile Átha Cliath



Dublin City
**Public
Participation
Network**

IEN
Irish Environmental Network

Catherine O'Toole

Irish Environmental Network

Local Environmental Networks (LENs)



DLR PPN
Dún Laoghaire-Rathdown
Public Participation Network



Fingal
Public
Participation
Network



South Dublin County
Public
Participation
Network

Líonra
Rannpháirtíochta
Pobail
Chathair Bhaile Átha Cliath



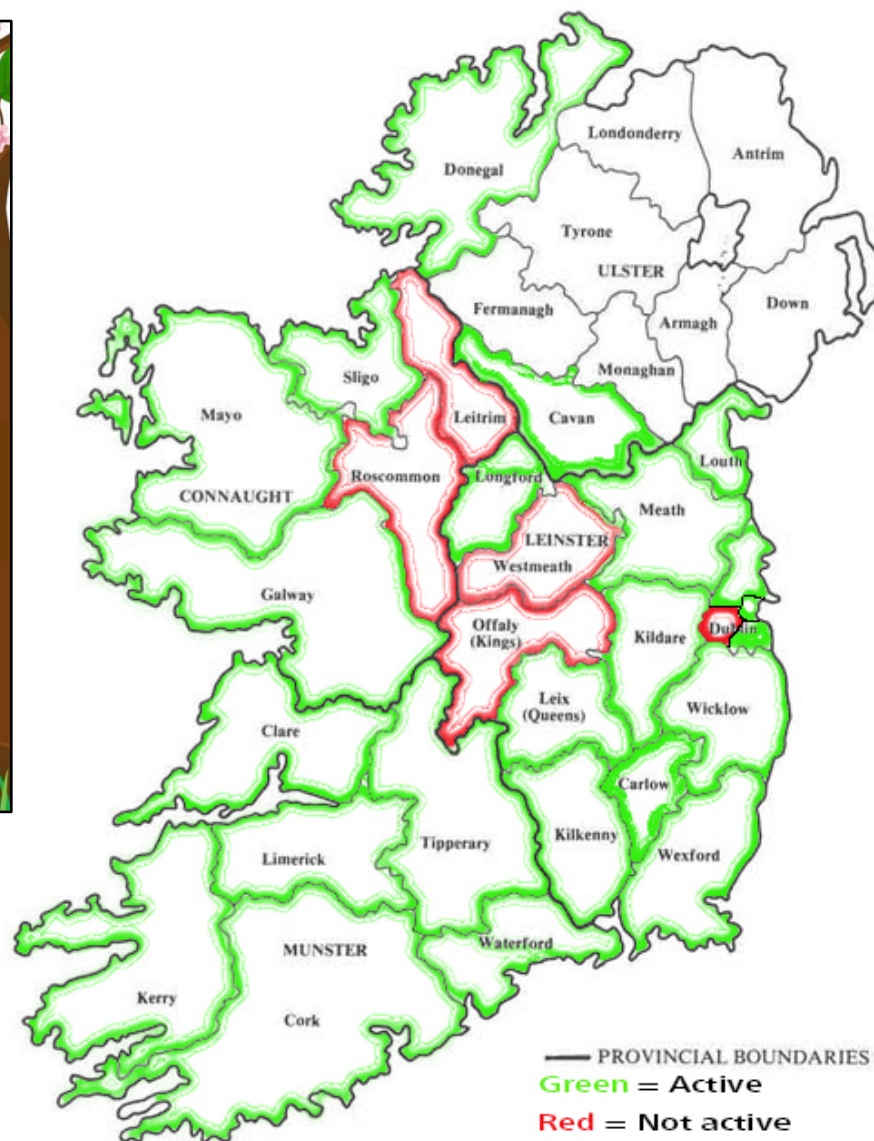
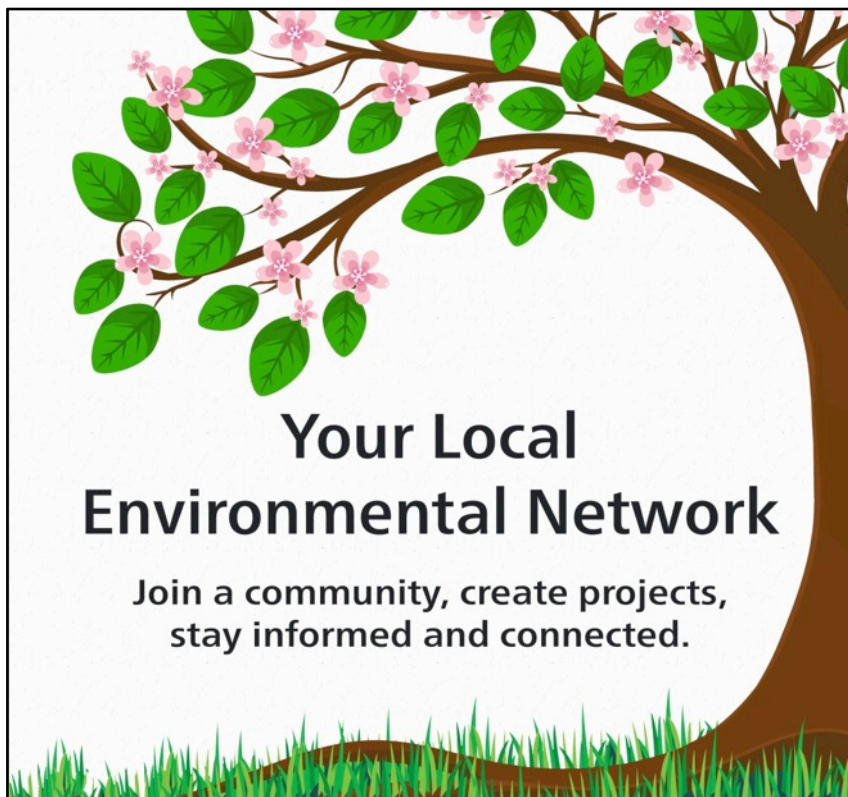
Dublin City
Public
Participation
Network

IEN
Irish Environmental Network

IEN Irish Environmental Network

The IEN is made up of 30 **nationally active** Irish Environmental NGOs. Our groups represent a broad range of environmental issues including everything from wildlife conservation to climate change.





See full LEN list:

<https://environmentalpillar.ie/public-participation-networks/local-environmental-networks/>

What do Local Environmental Networks provide?

Communication hub

- Promote your green events
- Share information
- Ask for help and advice
- Connect with others in your community
- Collaborate on projects

LEN members engage with the PPN

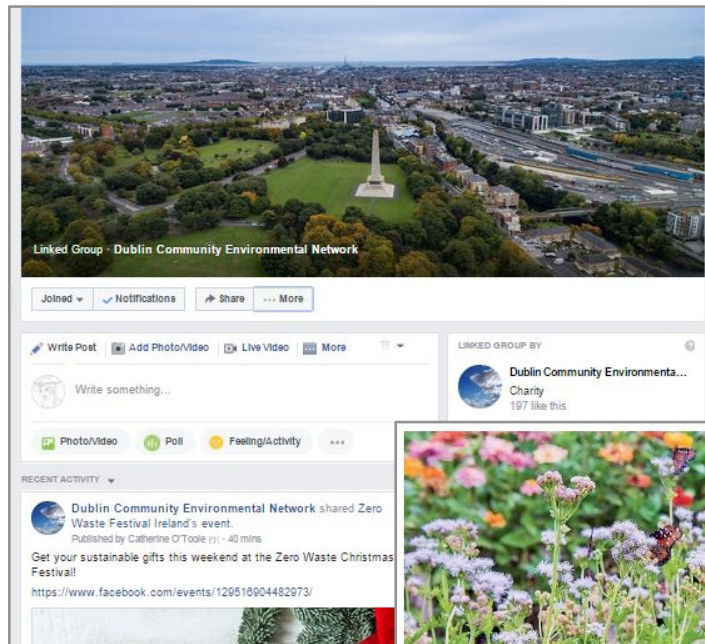
Dublin City

Facebook group

Newsletter

Engages with Dublin City

PPN



Help Save the Pollinators this Easter Weekend!

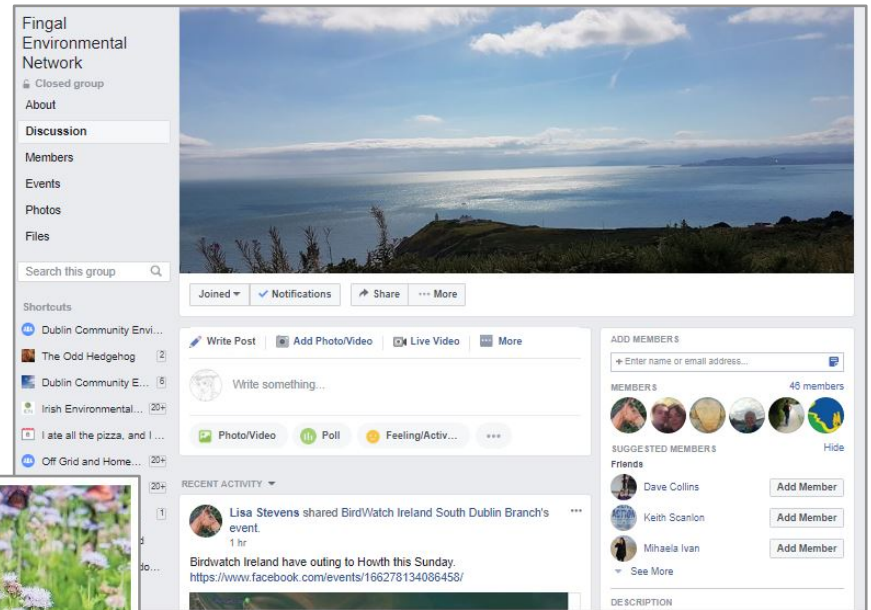
The public consultation on an EU initiative for pollinators is open until April 5th. DCEN members have come together to help each other submit individual submissions to this important consultation, and we are also working on a group submission which we would love your input into.

Fingal

Facebook page

Engages with Fingal

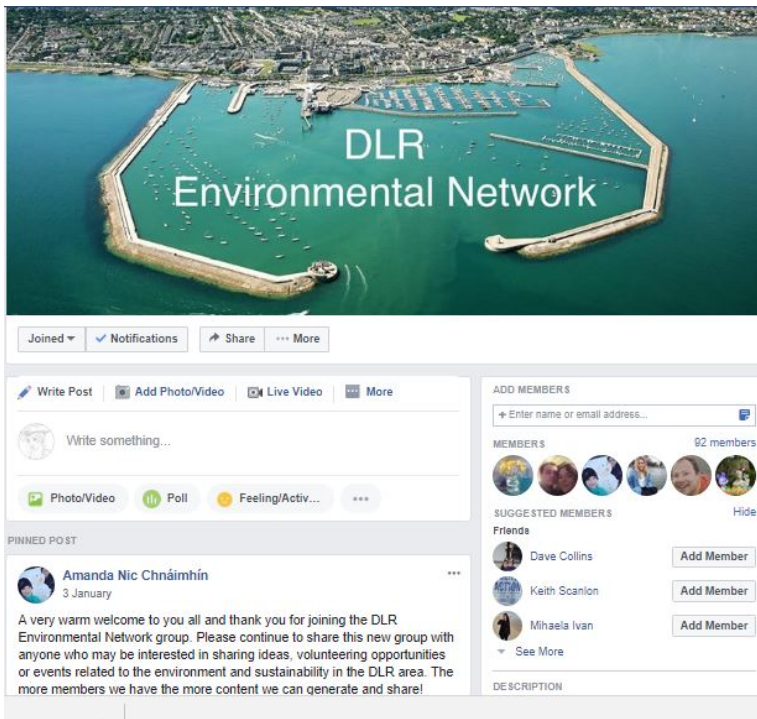
PPN



- dublincen@gmail.com
- fingalenvnet@gmail.com

Dun Laoghaire-Rathdown Facebook Group Not yet PPN members

South Dublin
Not active



Please get involved!

- Join an existing network
- Offer your help
- Set up a South Dublin Branch

I am here to help!
catherine@ien.ie
01 878 0115



Thank you!

Caitriona Rogerson

SDG Project Coordinator, Irish Environmental Network

The Sustainable Development Goals (SDGs)





Caitriona Rogerson

Irish Environmental Network

Caitriona@ien.ie

www.sdgsforall.ie

















hope





Zero Waste Cashel





Library of Things

Repair Cafes





Large quantities of surplus food from producers, manufacturers, and wholesalers



is collected and stored in a FoodCloud Hubs center (Dublin, Galway, or Cork)



for redistribution to Irish charities all year round



THE GLOBAL GOALS

For Sustainable Development



<https://sustainabledevelopment.un.org/sdgs>

Millennium Development Goals

(MDGs, 2000 – 2015)

VS

Sustainable Development Goals

(SDGs, 2015 – 2030)



Sustainable Development Goals

(SDGs, 2015 – 2030)



59 environmental targets out of 169

	TARGETS										
	1	2	3	4	5	6	7	8	9	10	Review
Goal 1	1.1	1.2	1.3	1.4	1.5						2017
Goal 2	2.1	2.2	2.3	2.4	2.5						2017
Goal 3	3.1	3.2	3.3	3.4	3.5	3.6	3.7	3.8	3.9		2017
Goal 4	4.1	4.2	4.3	4.4	4.5	4.6	4.7				2019
Goal 5	5.1	5.2	5.3	5.4	5.5	5.6					2017
Goal 6	6.1	6.2	6.3	6.4	6.5	6.6					2018
Goal 7	7.1	7.2	7.3								2018
Goal 8	8.1	8.2	8.3	8.4	8.5	8.6	8.7	8.8	8.9	8.10	2019
Goal 9	9.1	9.2	9.3	9.4	9.5						2017
Goal 10	10.1	10.2	10.3	10.4	10.5	10.6	10.7				2019
Goal 11	11.1	11.2	11.3	11.4	11.5	11.6	11.7				2018
Goal 12	12.1	12.2	12.3	12.4	12.5	12.6	12.7	12.8			2018
Goal 13	13.1	13.2	13.3								2019
Goal 14	14.1	14.2	14.3	14.4	14.5	14.6	14.7				2017
Goal 15	15.1	15.2	15.3	15.4	15.5	15.6	15.7	15.8	15.9		2018
Goal 16	16.1	16.2	16.3	16.4	16.5	16.6	16.7	16.8	16.9	16.10	2019
Goal 17 (1)	17.1	17.2	17.3	17.4	17.5	17.6	17.7	17.8	17.9	17.10	yearly
Goal 17 (2)	17.11	17.12	17.13	17.14	17.15	17.16	17.17	17.18	17.19		yearly



Why do we need to know about the SDGs?





Why do we need to know about the SDGs?

- ✓ Government's National Action Plan → emphasis on role of local authorities & local level action





Why do we need to know about the SDGs?

- ✓ Government's National Action Plan → emphasis on role of local authorities & local action
- ✓ Funding & Grant opportunities

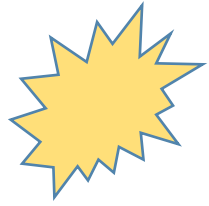




Why do we need to know about the SDGs?

- ✓ Government's National Action Plan → emphasis on role of local authorities & local action
- ✓ Funding & Grant opportunities
- ✓ Support lobbying & advocacy work



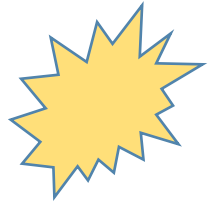


Take Action!



1. Register for free SDG Resource Pack –
display SDG icons on website, social media





Take Action!

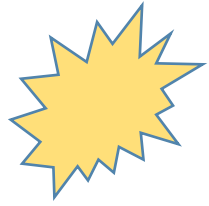


1. Register for free SDG Resource Pack –
display SDG icons on website, social media



2. Participate in a Free Workshop





Take Action!



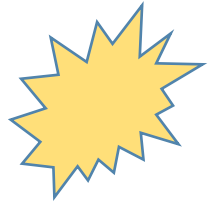
1. Register for free SDG Resource Pack –
display SDG icons on website, social media

2. Participate in a Free Workshop



3. Vote for PPN to support the Goals.





Take Action!



1. Register for free Resource Pack –
display SDG icons on website, social media

2. Participate in a Free Workshop

3. Vote for PPN to support the Goals.

4. Check out the ‘Sustainable Communities Toolkit’ <https://www.sustainabletoolkit.ie/ecological-integrity>





SUSTAINABLE DEVELOPMENT GOALS



Q & A Panel

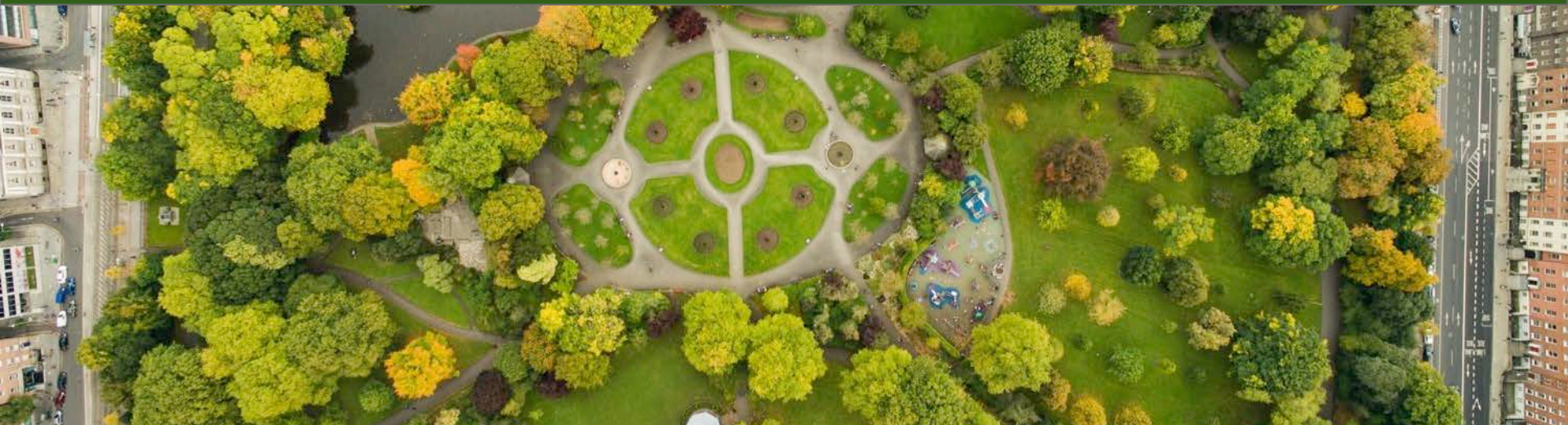
Robert Moss, An Taisce Green Communities/Dublin City PPN

Máire O'Brien, Fingal Environmental Network/Fingal PPN

Catherine O'Toole, IEN

Caitriona Rogerson, SDG Project Co-Ordinator, IEN

Duncan Stewart



Further information

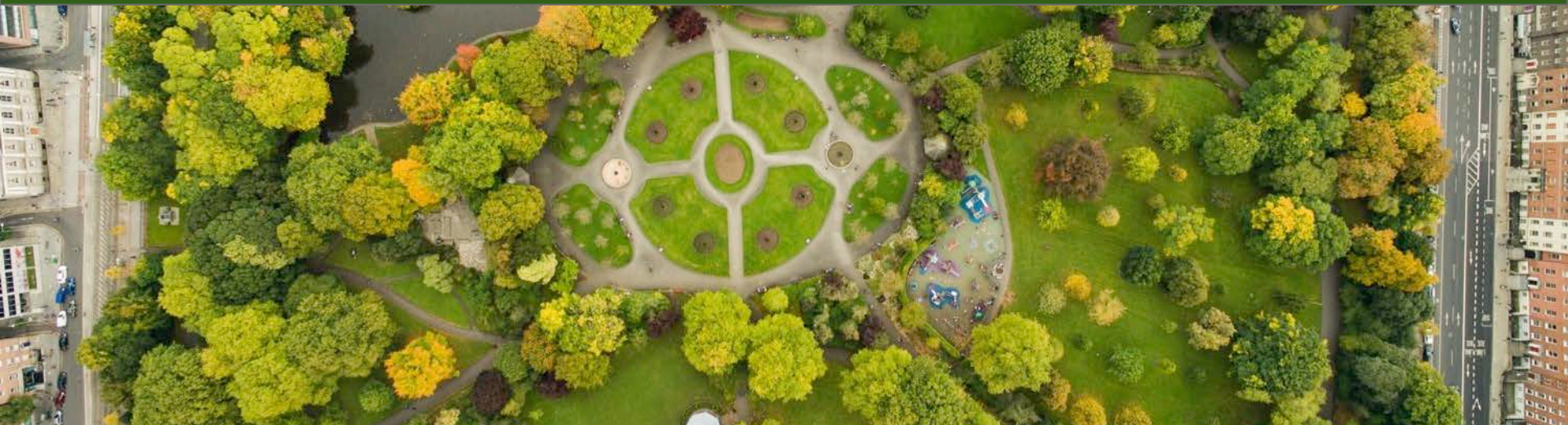
Dún Laoghaire-Rathdown PPN www.dlrppn.ie

Fingal PPN www.fingalppn.ie

Dublin City PPN www.dublincityppn.ie

South Dublin County PPN www.sdcppn.ie

Irish Environmental Network www.ien.ie



DLR PPN
Dún Laoghaire-Rathdown
Public Participation Network



Fingal
Public
Participation
Network



South Dublin County
Public
Participation
Network

Líonra
Rannpháirtíochta
Pobail
Chathair Bhaile Átha Cliath



Dublin City
Public
Participation
Network

IEN
Irish Environmental Network

Dublin Environmental Gathering

WOOD QUAY
7TH APRIL
2018



DLR PPN
Dún Laoghaire-Rathdown
Public Participation Network



**Fingal
Public
Participation
Network**



South Dublin County
**Public
Participation
Network**

Líonra
Rannpháirtíochta
Pobail
Chathair Bhaile Átha Cliath



Dublin City
**Public
Participation
Network**

IEN 
Irish Environmental Network